



**McFarland Clinic**  
**421 E. Merle Hibbs Blvd.**  
**Marshalltown**  
**641-752-0654**  
**McFarlandClinic.com**



#### DIRECTIONS FROM HWY 30

- 1 Take Highway 30 to the IA-14 / South Center Street exit.
- 2 Take South Center Street north. Drive approximately 1.1 miles to East Merle Hibbs Boulevard.
- 3 Turn right (east) onto East Merle Hibbs Boulevard. Drive approximately 0.4 miles.
- 4 421 East Merle Hibbs Boulevard is located on the south side of the street.

#### DIRECTIONS FROM HWY 14 (NORTHBOUND)

- 1 Highway 14 becomes South Center Street as you enter Marshalltown.
- 2 Continue on South Center Street to East Merle Hibbs Boulevard.
- 3 Turn right (east) onto East Merle Hibbs Boulevard. Drive approximately 0.4 miles.
- 4 421 East Merle Hibbs Boulevard is located on the south side of the street.

#### DIRECTIONS FROM HWY 14 (SOUTHBOUND)

- 1 Highway 14 becomes North 3rd Avenue as you enter Marshalltown.
- 2 Continue on North 3rd Avenue to East Anson Street.
- 3 Turn right (west) onto East Anson Street. Drive approximately 0.2 miles to South Center Street.
- 4 Use the left 2 lanes to turn left (south) onto South Center Street. Drive approximately 1.7 miles to East Merle Hibbs Boulevard.
- 5 Turn left (east) onto East Merle Hibbs Boulevard. Drive approximately 0.4 miles.
- 6 421 East Merle Hibbs Boulevard is located on the south side of the street.



SCAN FOR  
 DRIVING  
 DIRECTIONS

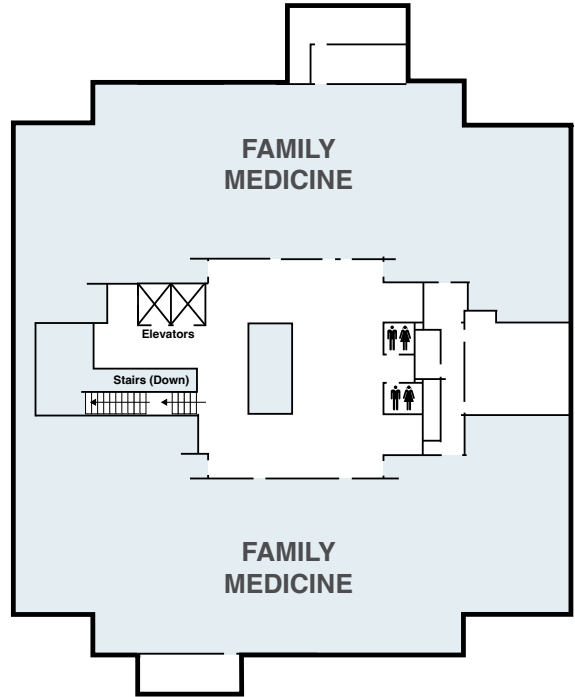
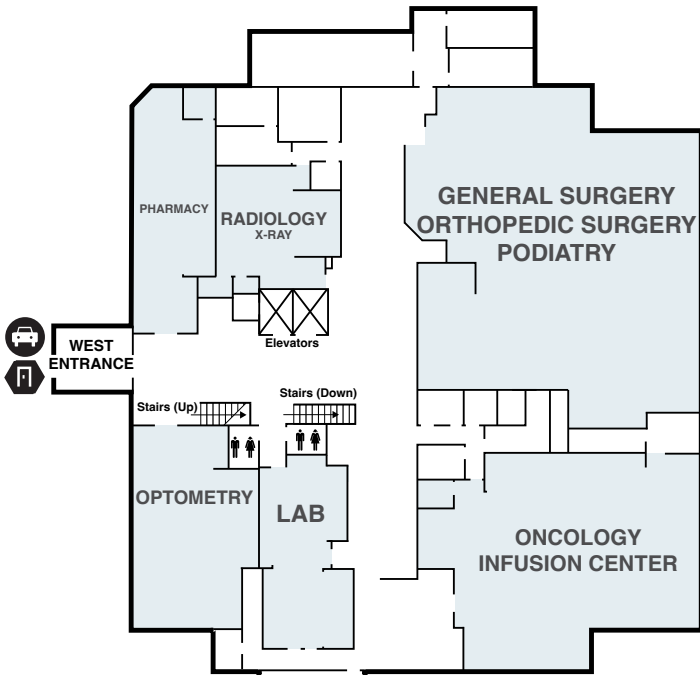
[bitly.com/mcfarland421](https://bitly.com/mcfarland421)



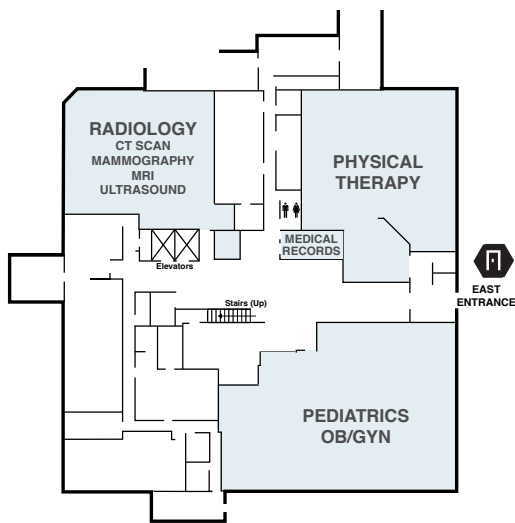
McFarland Clinic  
421 E. Merle Hibbs Blvd.  
Marshalltown  
641-752-0654  
McFarlandClinic.com

### FIRST FLOOR

### SECOND FLOOR



### GARDEN LEVEL



Extraordinary Care,  
Every Day



Patient Drop Off  
and Pickup